



Matting Solutions (Commercial, Retail, Pharma/ Laboratory and Industrial)



Matting Solutions

CATALOGUE

SUPPLIED BY INDUSTRIS CC

Content



- 02-04** About Us
- 05-17** Entrance Matting
- 18-36** Workspace & Anti-Fatigue Matting
- 37-42** Disinfecting Mats
- 43** Get in Touch

Welcome!

EMPOWERING THE FOOD INDUSTRY SINCE 1999

25+

Years of Experience

Over two decades of expertise in supplying high-quality equipment for food processing and laboratory projects.

240+

Products

A diverse range of more than 200 specialized products and solutions.

98%

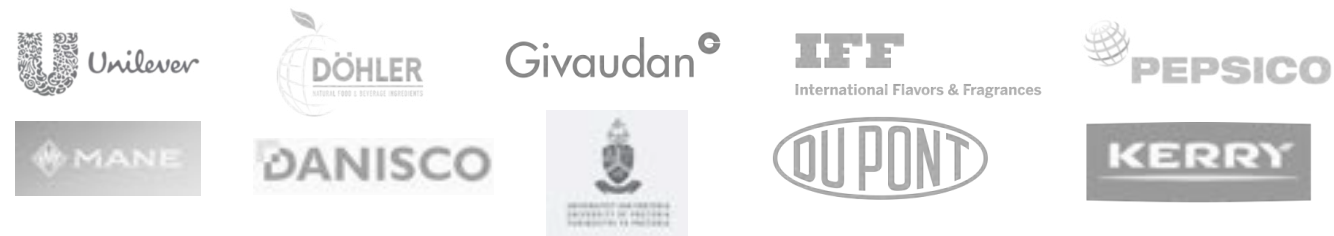
Customer Satisfaction

Consistently high customer satisfaction rate, reflecting our commitment to quality and service.

Innovation and Quality

Collaborating with top international brands ensures access to cutting-edge technologies and high-quality standards.

Companies using our products.



About Us

Industris CC is a proudly South African-based company that distributes high-quality laboratory and pilot plant equipment in Southern Africa.

We specialize in offering equipment for monitoring laboratory and pilot development projects, as well as providing a range of matting solutions to ensure superior hygiene and safety.

WWW.INDUSTRIS-CO.COM

At Industris CC, we take pride in supplying top-quality equipment and matting solutions for food processing, laboratory, and pilot development projects. Discover our extensive selection of entrance, workspace and disinfecting mat solutions designed to enhance hygiene and safety in various environments.

Our Mission

We are dedicated to enhancing the efficiency and quality of food processing and laboratory operations. We provide cutting-edge solutions that meet the evolving needs of our clients, ensuring high standards of quality control and operational excellence.

Our Vision

To be a leading supplier of specialized equipment and solutions in Southern Africa, recognized for our commitment to quality, innovation, and customer satisfaction.



Entrance Matting

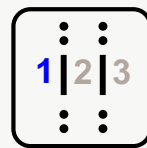


The COBA©Matco brand offers an extensive range of Aluminium, Carpet and PVC Tiled based entrance matting systems that are both stylish and deliver superior wear resistance for busy areas subjected to high volumes of pedestrian footfall. Many of our options have environmentally-friendly credentials, incorporating recycled materials in their manufacture.

Whether it is interlinking entrance tiles, carpet on rolls or a custom made aluminum system, our sales team can advise at every stage of specification and installation.

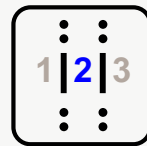
Zones

We recommend a zoning system when choosing your entrance matting. Whether your entrance extends outdoors or is fully covered, creating three zones delivers optimum dirt barrier performance, ensuring interior floors are kept clean and hazard free.



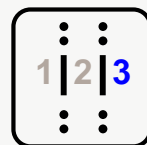
ZONE 1

Zone 1 is all about scraping and removing the initial 'surface' dirt, mud and moisture. The matting should have a more abrasive surface, or tough bristle, for scraping action.



ZONE 2

Zone 2 is usually the location of the main entrance mat section. Often set in a recessed matwell, it is designed to capture dirt and moisture for removal later on.



ZONE 3

Zone 3 cleans and dries the soles of shoes or wheels, before they finally reach the internal floor coverings.

PEDESTRIAN TRAFFIC

It is important that matting is a sufficient length to allow moisture and debris to be wiped off footwear as people walk across the mat. Our Team recommends a minimum of six footsteps for this to be effective.



Light
Less than
80 people per
hour 3-4 metres



Medium
Up to 300 people
per hour
6-7 metres



High
Around 600
people per hour
8-10 metres



Very High
Over 5,000 people
per day
9-12 metres

WHEELED TRAFFIC

Depending on the nature of the building, the entrance may have to contend with different types of wheeled traffic. It is important that all matting complies with National Building Regulations Act so that wheelchairs can safely move on and off.



Light
Suitcases,
Wheelchairs



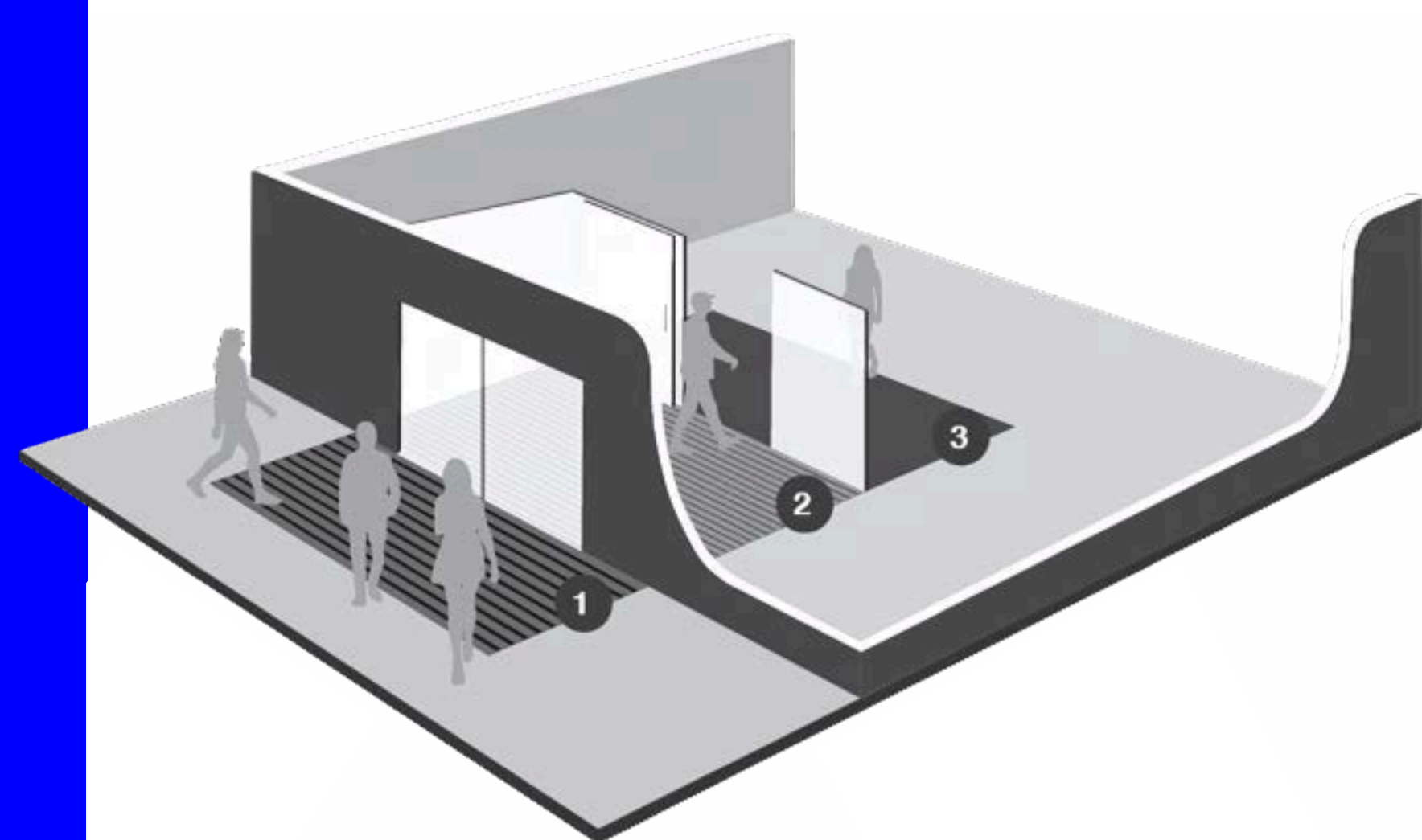
Medium
Supermarket Trolleys,
Sack barrows,
Luggage trolleys



Heavy Duty
Supermarket
Cages, Pallet
Trucks



Max Duty
Forklift Trucks,
Hydraulic Cranes





Plan.a™ Entrance Matting

Defend against dirt and moisture with versatile aluminium entrance matting



PEDESTRIAN TRAFFIC RATING



WHEELED TRAFFIC RATING:
MAX DUTY (195 KG PER WHEEL)



10 YEAR WARRANTY



ALL ZONES



MAIN CONTAMINANT:
WATER

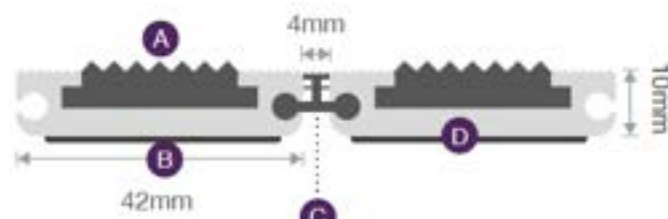


MAIN CONTAMINANT:
DIRT

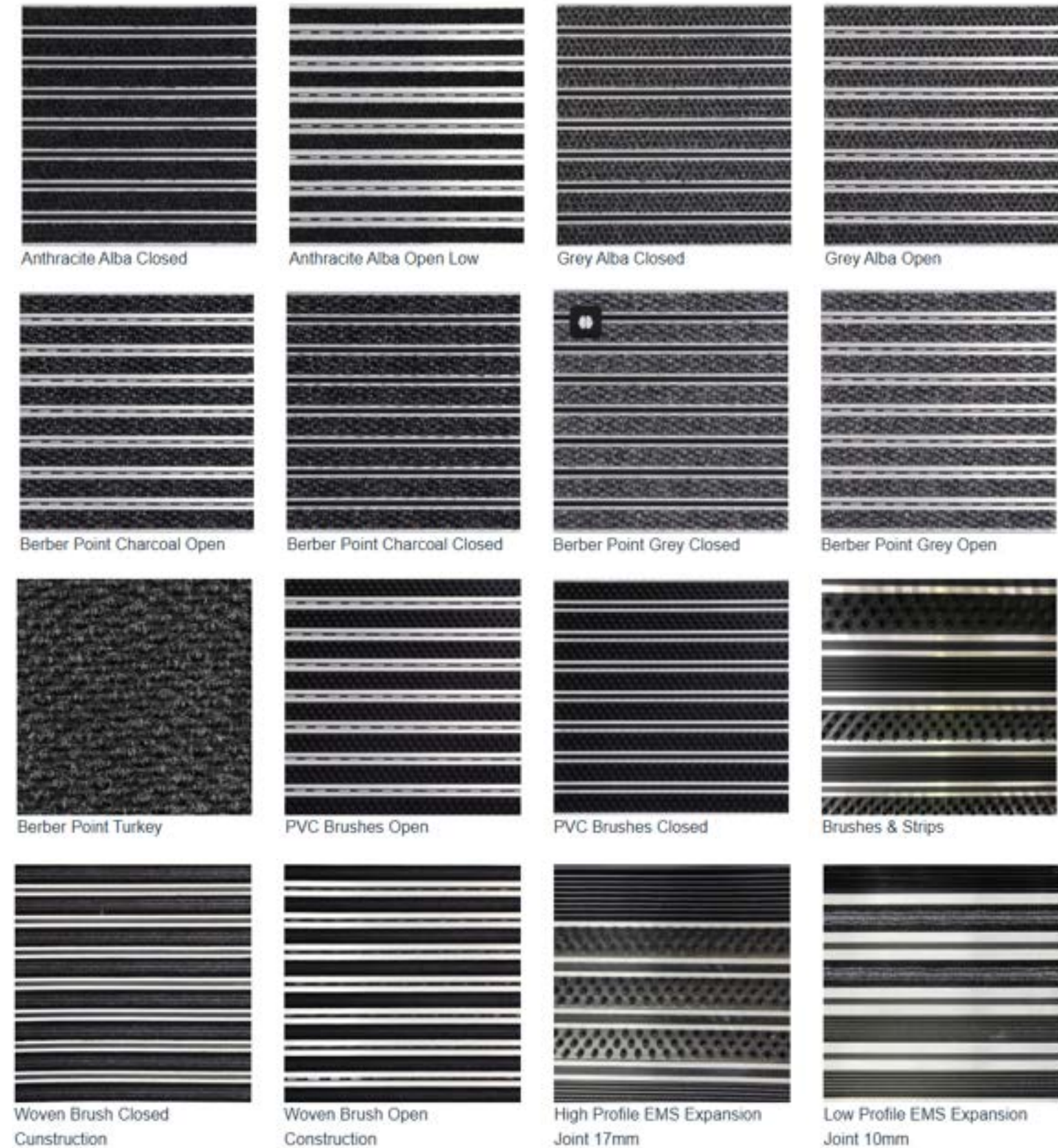
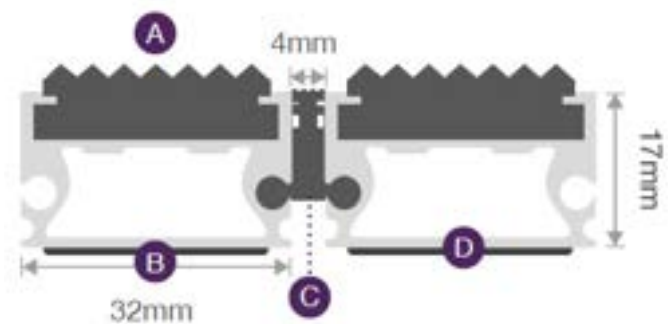
Plan.a™ Entrance Matting

- Robust, high-quality aluminium system for heavy-duty use designed to cope with high footfall.
- Flexible, yet durable PVC linking joints for ease of handling and easy fitting.
- Custom-made to order to your specifications.
- Choose from one, or a combination of different surface options.
- Also now available with vibrant coloured needle punch or needle felt polypropylene carpet inserts as used in our Logomat Precision products.
- Manufactured in the UK.
- Fire tested to BS EN 13501-1 and slip tested to BS 7976-2.

LOW PROFILE



STANDARD PROFILE



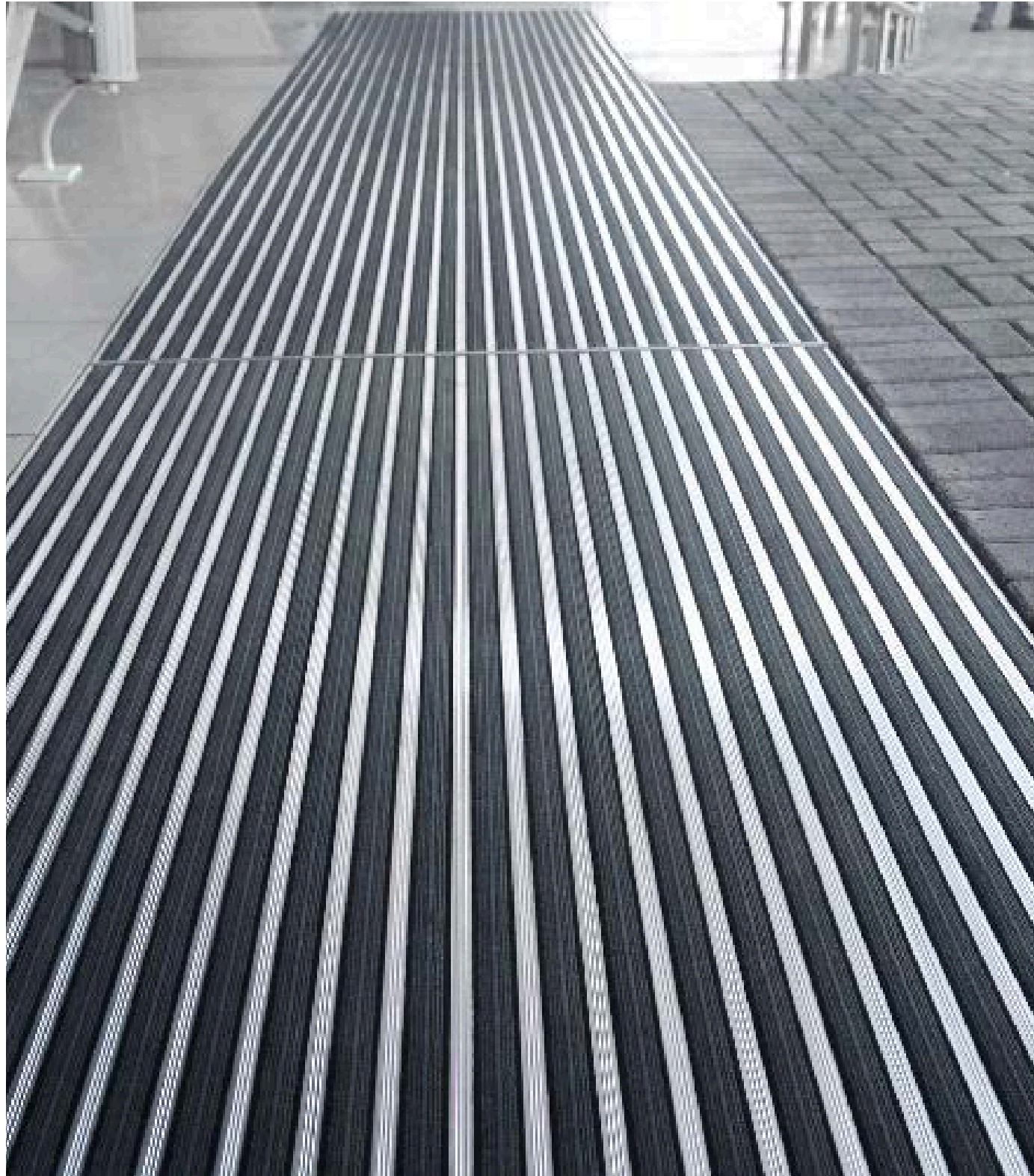
STYLES AVAILABLE

WWW.INDUSTRIS-CO.COM

Plan.a™ Entrance Matting

Part Number	Size	Description	Colour
PLANA0024	Per Square Metre		
PLANA0023	Per Square Metre		
PLANA0022	Per Square Metre		
PLANA0021	Per Square Metre		
PLANA0020	Per Square Metre	Standard Profile PVC Scraper Strips (Closed Construction)	Black
PLANA0019	Per Square Metre	Standard Profile PVC Scraper Strips (Open Construction)	Black
PLANA0018	Per Square Metre	Low Profile with PVC Scraper Strips (Closed Construction)	Black
PLANA0017	Per Square Metre	Low Profile with PVC Scraper Strips (Open Construction)	Black
PLANA0016	Per Square Metre	Standard Profile Nylon Black Brush (Closed Construction)	Various
PLANA0015	Per Square Metre	Standard Profile Nylon Black Brush (Open Construction)	Various
PLANA0014	Per Square Metre	Low Profile with Nylon Black Brush (Closed Construction)	Various
PLANA0013	Per Square Metre	Low Profile with Nylon Black Brush (Open Construction)	Various
PLANA0012	Per Square Metre	Standard Profile with Wovenbrush (Closed Construction)	Black
PLANA0011	Per Square Metre	Standard Profile with Wovenbrush (Open Construction)	Black
PLANA0010	Per Square Metre	Low Profile with Wovenbrush (Closed Construction)	Black
PLANA0009	Per Square Metre	Low Profile with Wovenbrush (Open Construction)	Black
PLANA0008	Per Square Metre	Standard Profile with Berber (Closed Construction)	Various
PLANA0007	Per Square Metre	Standard Profile with Berber (Open Construction)	Various
PLANA0006	Per Square Metre	Low Profile with Berber (Closed Construction)	Various

Material	Aluminium rails, PVC connection strips, ECONYL® Regenerated Nylon, PP or PVC inlays
Surface Finish	Carpet, brushes or scrapers
Product Height	10 mm, 17 mm
Durability	Heavy to very heavy traffic entrances
Environmental Resistance	Suitable for wet and dry environments
UV Resistance	Yes
Typical Applications	Entrance areas
Installation Method	Installed in to recessed matwell or surface mounted with ramped edges
Other Product Performance Information	Uniform floor load = 14.36 KN/ m ² . Wheel load 159 kg per wheel
Fire Tested to	Alba inserts: BS EN 13501-1 Class Cfl - s1. PVC scraper inserts: BS EN 13501-1 Class Cfl - s2.
COO (Country of Origin)	UK
Notes	Alba is a tufted carpet product and therefore its appearance can vary depending on the direction of the pile and the light in the surrounding environment. To achieve a uniform appearance consider hoovering the product in a single direction.
Slip Tested to	BS 7676-2 Pendulum Slip Test- Alba inserts, Needlepunch inserts, PVC scraper inserts



Dm Aluminum Entrance Matting

High-quality aluminum matting



PEDESTRIAN TRAFFIC RATING



WHEELED TRAFFIC RATING: HEAVY DUTY



10 YEAR WARRANTY



ZONE 1 & 2



MAIN CONTAMINANT: WATER

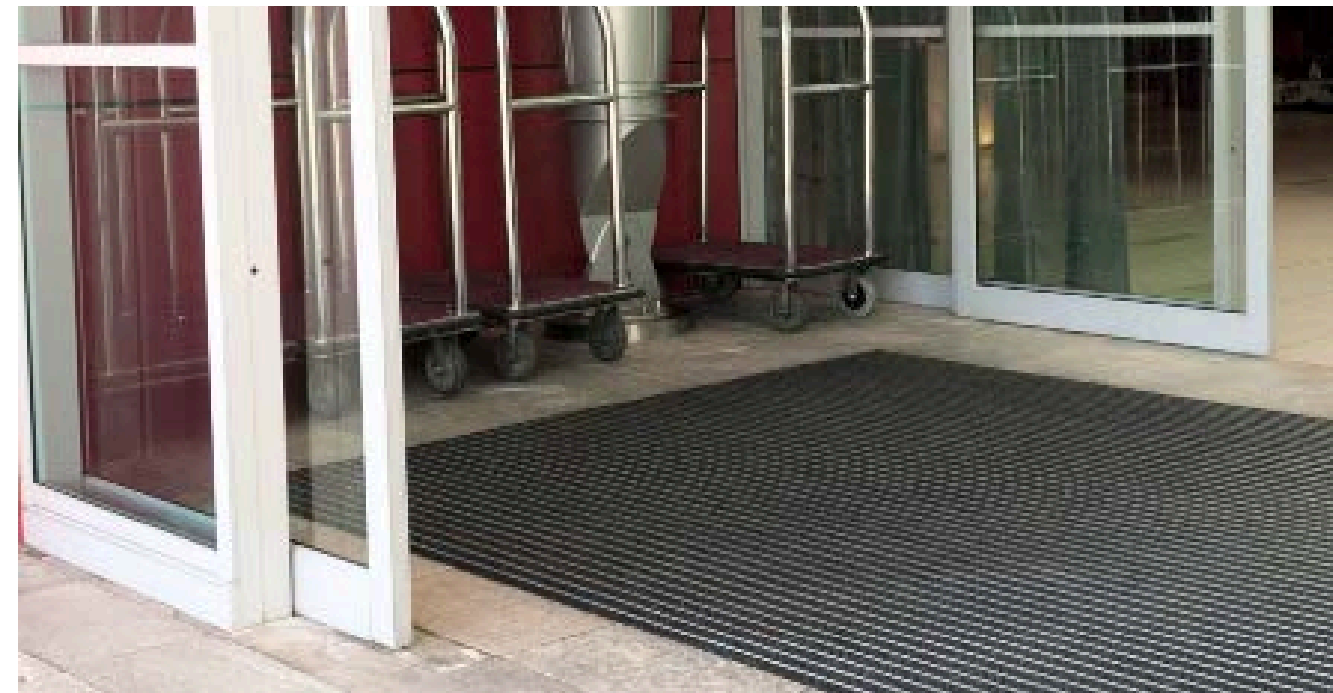


MAIN CONTAMINANT: DIRT

Dm Aluminum Entrance Matting

- Robust, high-quality aluminium system for heavy-duty use.
- Three surface options available: Woven Brush, Berber Point or Alba.
- Durable linking joints for ease of handling/fitting.
- Suitable for high volume footfall in commercial locations.
- Custom-made to order.
- Moulded bevelled edges reduce trip hazards and are suitable for wheeled access.
- Samples are available on request for pre-qualified leads and resellers only.
- Strength designation: 4.6%.

Part Number	Size	Description	Colour
DMA010001	1 m x per metre square	Berber Point Inserts	Charcoal
DMA010002	1 m x per metre square	Woven Brush Inserts	Charcoal
DMA010003	1 m x per metre square		Anthracite



Berber Point Charcoal



Alba Anthracite

Material	Aluminium channels with carpet inserts
Backing	High density PE60
Product Height	12 mm
Product Weight	11 kg/m ²
Environmental Resistance	Suitable for indoor environments only
Installation Method	Installed in to recessed well
Fire Tested to	Alba inserts: BS EN 13501-1 Class Cfl - s1.
COO (Country of Origin)	UK



Berberpoint Logo Mat

Superior, eye-catching finish and durable logo mat solution



FATIGUE RATING



SLIP RATING



WEAR RATING



OIL RESISTANT



FIRE TESTED



SUITABLE FOR WET ENVIRONMENTS

Berberpoint Logo Mat

- Textured stainproof Miracle Fibre (polypropylene) & Eco Fibre Blend provide outstanding scraper action.
- Non-slip gripper back.
- Popular for both interior walkways and reception areas providing a total dirt-barrier solution.
- Also frequently used in recessed matwells in entrance areas.
- Available with optional edging.
- Colours are specified with each order
- Graphic inlay mats that doesn't require any printing.
- Face Fibre – Blend of Stainproof Miracle Fibre & Stainproof Miracle Fibre Eco (Certain Colours)
- Suitable for glue-down or lay to surface applications. Product Height: 6-9mm
- Price is subject to change depending on the artwork/logo supplied by client, and the size of the mat.



STYLES AVAILABLE

Part Number	Size	Color
SC000005	per linear metre	Colour Swatch



Spectra Clean Logo Mat

High quality graphic inlay logo mats in your design



WWW.INDUSTRIS-CO.COM

Spectra Clean Logo Mat

- The textured top surface provides outstanding scrubbing action, whilst absorbing moisture to save your floors from dirty footprints.
- Enhance this entrance mat by inserting a custom-made company logo.
- 25 colours to choose from (colours may vary).
- Graphic inlay mats that doesn't require any printing.
- Price is subject to change depending on the artwork/logo supplied by client, and the size of the mat.

Material	100% Polypropylene
Backing	Non-slip gripper back
Product Height	11 mm
Product Weight	2.8 kg/m2
Typical Applications	Interior or well covered exterior entrances.
Cleaning Method	Vacuum clean or brush vigorously on a regular basis.
Fire Tested to	Efl
COO (Country of Origin)	NE



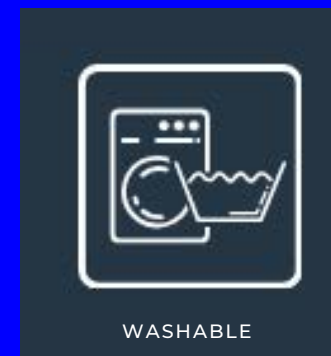
STYLES AVAILABLE

Part Number	Size	Color
SC000005	per linere metre	Colour Switch



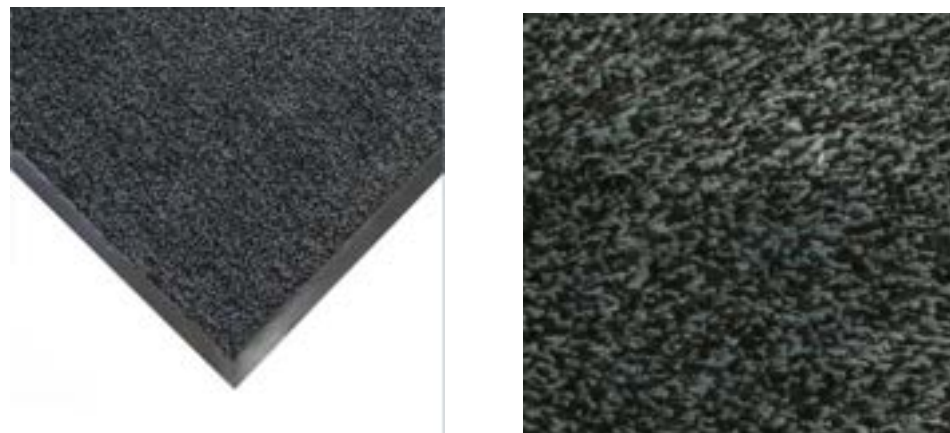
Microfibre Washable Doormat

Washable doormat with super absorbency and microfibre technology



Microfibre Washable Doormat

- Multi-action entrance mat with hygienic microfibre technology.
- Flexible, ultra-fine fibres (finer than a human hair) provide deep-cleaning action on passing footwear.
- Friction from the fibres generates a static charge that attracts and traps dust/debris.
- Effectively penetrates those hard to reach treads on footwear and wheeled trolleys.
- Superior 'brushing and wiping' with 'rapid dry' properties that outperform cotton.
- Luxuriously soft pile that keeps entrances looking smart, stylish and free from lint.
- Environmentally-friendly – does not require chemical pre-treatment or washing detergents.



Part Number	Size	Color	Weight (kg)
MF010001	0.6 m x 0.9 m	Black	1.5
MF010002	0.9 m x 1.5 m	Black	3.8
MF010003	1.8 m x 1.2 m	Black	6
MF010004	0.6 m x 0.4 m	Brown	0.8
MF010005	0.75 m x 0.45 m	Brown	1.1
MF010006	0.6 m x 0.4 m	Brown	0.8

Workspace & Anti-Fatigue Matting



STANDING FATIGUE IN THE WORKPLACE

The Problem with Standing

When standing still, gravity causes fluid to settle in the feet and legs, which in turn can create pooling and swelling. Standing puts the circulatory system under pressure, in particular the Venous System, making the heart work harder. Regular standing in static positions can slowly damage the elasticity of soft tissues. This degenerative damage can lead to rheumatic diseases.

As tiredness sets in joints such as the ankles and knees can tense up and become locked. There is a tendency to shift weight from one side to the other, increasing the release of muscular energy which can lead to fatigue.

How does Anti-Fatigue matting work?

Anti-Fatigue mats encourage regular foot movement (even in static positions). The feet subtly adapt to the mats cushioned surface, promoting healthy circulation. This movement, although subtle, makes the foot and calf muscles expand and contract, activating the Venous Pump pushing blood back up to the heart against the force of gravity.

This naturally occurs when we walk. Anti-Fatigue mats help to replicate this action even when the user is standing in a static position.

Product Testing Guide

COBA© International group, in partnership with the internationally recognised SATRA, have tested over 40 product lines to the latest standards in slip and fire safety, and ESD ratings.



Fire Test: BS EN 13501-1
Reaction to fire classification
 The classification is split into three parts:

The main part of the classification is its letter – A1, A2, B, C, D, E and F. A1 (Non-combustible) is the highest level of performance.

There is a smoke classification of s1, s2 or s3.
 s1 is the highest level of performance.

There is a classification of flaming droplets of d0, d1 or d2.
 d0 is the highest level of performance.



ESD Test: IEC 61340-5-1
Protection of electronic devices from electrostatic phenomena - General requirements



Pendulum Slip Test: BS 7976-2:2002+A1:2013
Internationally recognised British standard that uses a pendulum device to measure a surface material's slip potential.

Slip Potential	PTV
High slip potential	0 – 24
Moderate slip potential	25 – 35
Low slip potential	36+

Ramp Slip Test: DIN 51130:2014
Internationally recognised German standard that measures slip potential by the angle at which the surface material loses friction.

R Value	Category Static Friction is	Angle of Inclination
R9	Low	6° to 10°
R10	Normal	>10° to 19°
R11	Above Average	>19° to 27°
R12	High	>27° to 35°
R13	Very High	>35°

Ramp Slip Test: DIN 51097
Internationally recognised German standard that for testing surface materials in wet, soapy conditions such as those found in leisure industry.

Classification	A	B	C
Slip Angle	12 – 17	18 – 23	>24
CoF	0.21-0.31	0.32-0.42	>0.45



Orthomat® Premium Anti Fatigue Mat

Reduces standing fatigue for those that move at work.

			
FATIGUE RATING	SLIP RATING	WEAR RATING	FIRE TESTED

Orthomat® Premium Anti Fatigue Mat

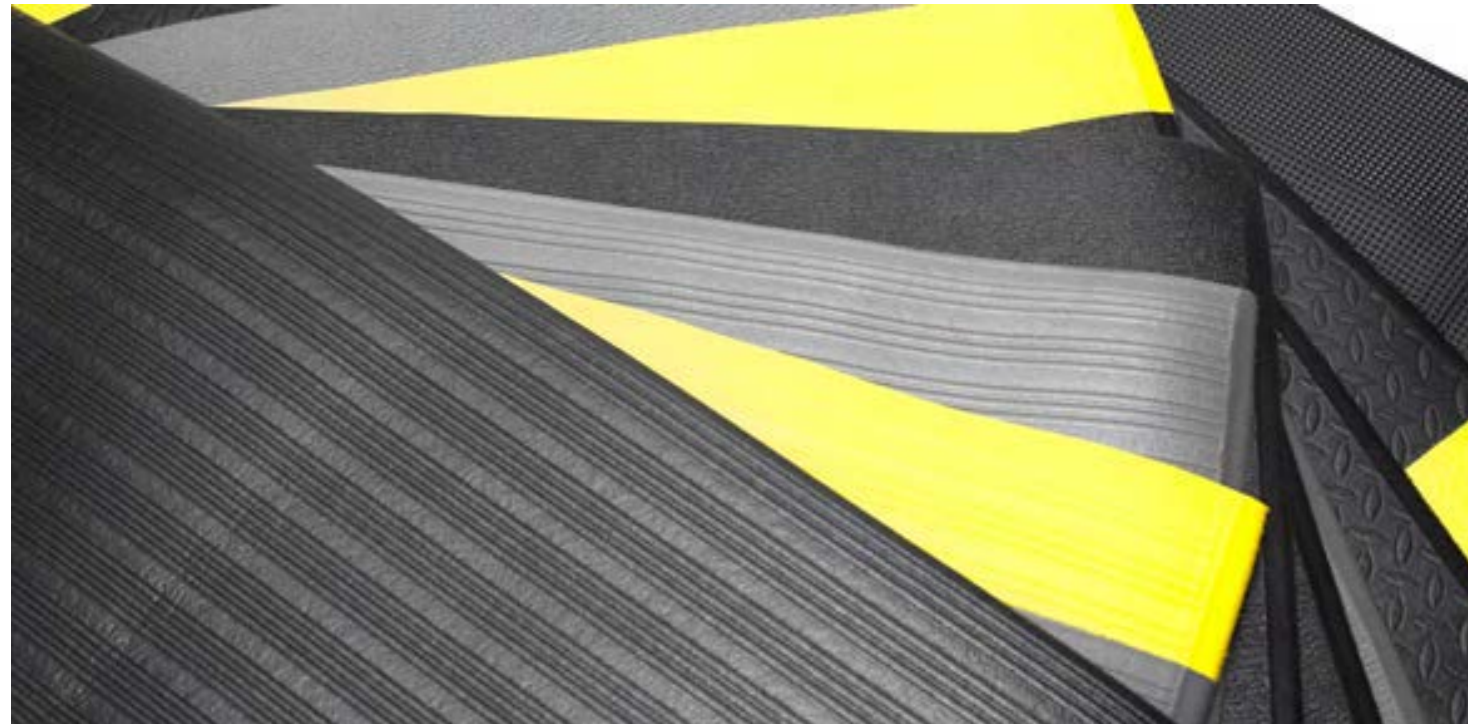
- Exceptional fatigue-relief properties – a real investment for the workplace.
- Dual layer construction for superior comfort and durability.
- Tough textured top surface for excellent resilience against wear and tear.
- Insulates against the effects of cold concrete floors.
- Low density under layer provides extremely effective underfoot cushioning.
- Ideal for demanding locations, especially where regular turning is involved.
- Tapered edges to reduce trip hazards.
- Range of colours available.
- Fire tested to BS EN 13501-1.



Part Number	Size	Color	Weight (kg)
WC000004	0.45 m x 1.17 m	White	3.25
WC020004	0.45 m x 1.17 m	Blue	3.25

Orthomat® Premium Anti Fatigue Mat

Part Number	Size	Color	Weight (kg)
FF010703C	0.9 m x per linear metre	Black/Yellow	1.35
FF010703	0.9 m x 18.3 m	Black/Yellow	24.71
FF010702	0.9 m x 1.5 m	Black/Yellow	2.03
FF010701	0.6 m x 0.9 m	Black/Yellow	0.81
FF010003	0.9 m x 18.3 m	Black	66
FF010002	0.9 m x 1.5 m	Black	4.99
FF010001	0.6 m x 0.9 m	Black	2



Material	Open Cell PVC (Foam)
Surface Finish	Tough Textured top surface
Product Height	12.5 mm
Roll Length	18.3 m
Min. Operating Temperature	0°C
Max. Operating Temperature	+60°C
Resistance to Chemicals	Resistant to most chemicals
Environmental Resistance	Suitable for dry indoor environments
Typical Applications	Production lines, Assembly areas, Packing stations, Workbenches, Retail counters
Installation Method	Loose lay
Accessories	Bevelled edging
Cleaning Method	Brush/mop the top surface
Fire Tested to	BS EN 13501-1 Class Dfl - s1
COO (Country of Origin)	CN
Guarantee	2 years when used in a dry environment



Unimat Workplace Mat

Heavy-duty anti-fatigue matting for kitchen areas and behind bars.



FATIGUE RATING



SLIP RATING



WEAR RATING

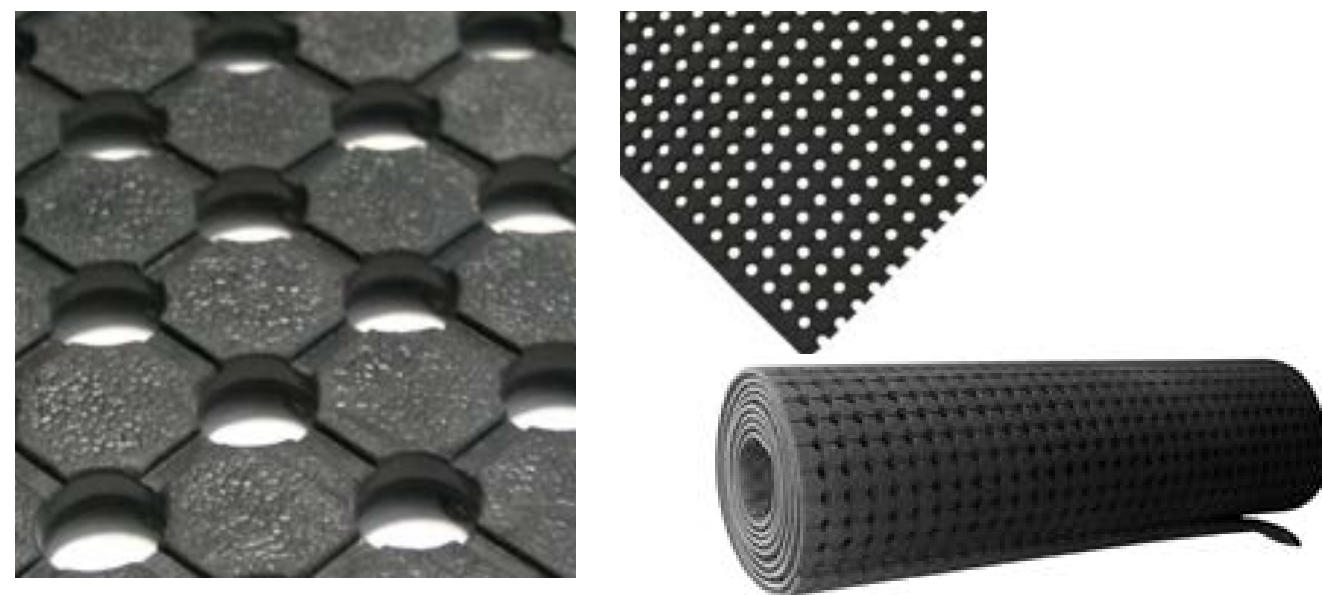


SUITABLE FOR WET ENVIRONMENTS

Unimat

- Versatile rubber runner.
- Open holes provide excellent drainage.
- A real asset in helping to prevent slipping in wet/oily areas.
- Easy to roll up and move to new locations or for cleaning.
- Slip tested to DIN 51130.

Part Number	Size	Color	Weight (kg)
UM010001	1 m x 5 m	Black	37
UM010002	1 m x 10 m	Black	74



Material	Rubber mix, including >50% recycled material.
Surface Finish	Raised anti-slip textured surface with holes to allow drainage
Product Height	10 mm
Product Weight	4 kg
Roll Length	10 m
Min. Operating Temperature	-20°C
Max. Operating Temperature	+130°C
Resistance to Chemicals	Resistant to water and most mild acids
Environmental Resistance	Suitable for wet and dry indoor environments
Typical Applications	General industrial, Bars, Catering environments
Installation Method	Loose lay
Cleaning Method	Hose down or pressure wash using a mild detergent
Other Product Performance Information	Impact resistant up to 3 kg /c m ²
COO (Country of Origin)	IN
Tensile Strength	3 to 3.5 MPa
Slip Tested to	DIN 51130 - R10



COBA Deluxe Workspace Mats

Fatigue relief ideal for bar areas



FATIGUE RATING



SLIP RATING



WEAR RATING

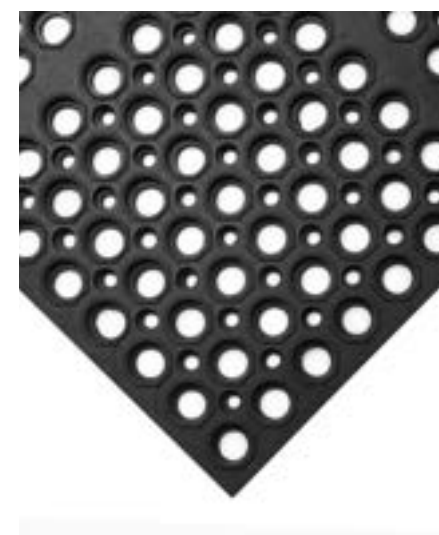


SUITABLE FOR WET
ENVIRONMENTS

COBA Deluxe Workspace Mats

- Effective in reducing glass breakage.
- Creates a safe and very comfortable standing surface.
- Its thickness makes it a durable mat that can withstand impact.
- Quickly cover large areas if used as a connecting system.
- Made from hardwearing rubber providing longevity.
- Excellent slip resistance in wet areas.
- Open drainage holes for spilt liquids make it ideal for wet workplaces.
- Use of optional edges is recommended to reduce the risk of trips. Slip tested to DIN 51130.

Part Number	Size	Color	Weight (kg)
DM010002	1 m x 1.5 m	Black	16.4
DM010003	N/A	Connector	0.3





COBAscrape Rubber Workplace Mat

A durable anti-slip mat ideal for areas prone to oil or chemical spillage



FATIGUE RATING



SLIP RATING



WEAR RATING



OIL RESISTANT

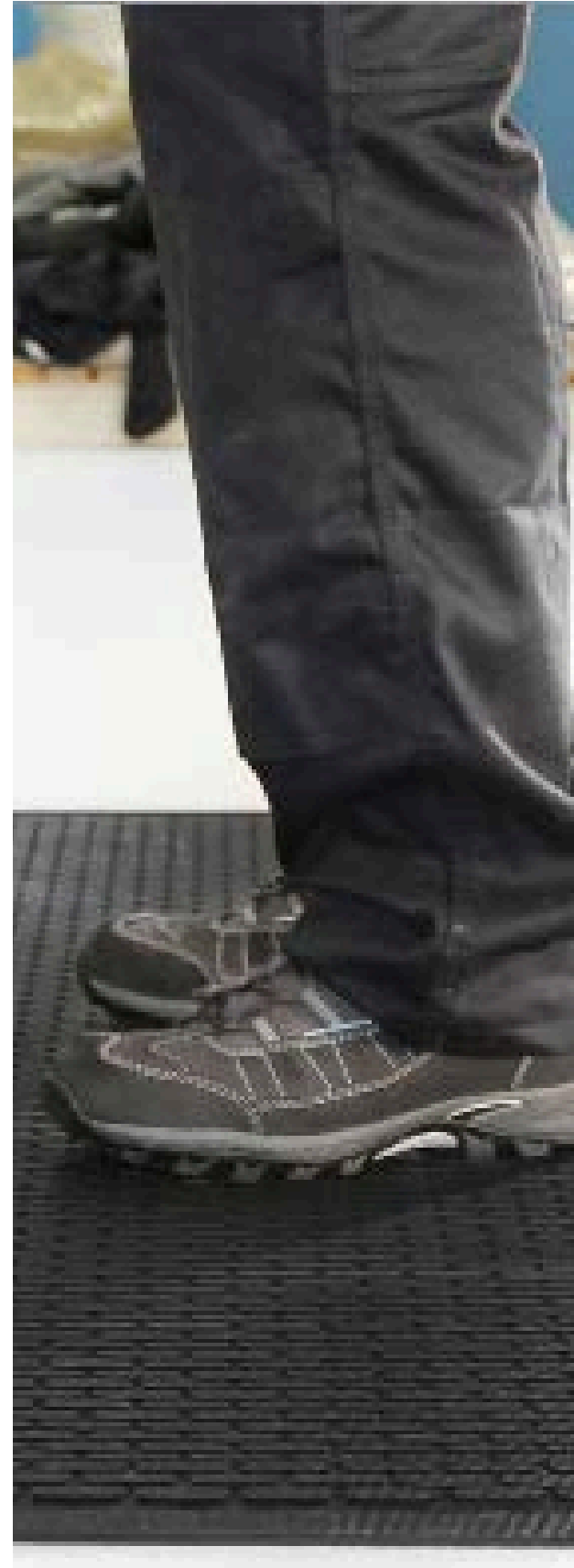


SUITABLE FOR WET ENVIRONMENTS

COBAscrape Rubber Workplace Mat

- A solid surface mat designed to reduce slips in oily or greasy conditions.
- Raised surface pattern provides extra underfoot grip.
- Recessed pattern creates drainage channels to capture liquids.
- Makes standing more comfortable in a wide range of workplace environments.
- Resilient to degradation in oily, greasy and chemical prone areas for a longer lifespan.
- Single mat design makes it a quick and simple solution to reduce slip accidents.
- Bevelled edges as standard to reduce the risk of trips.
- Slip tested to DIN 51130.

Part Number	Size	Color	Weight (kg)	Recycled Content %
CS010004	1.15 m x 1.75 m	Black	8.5	70
CS010003	0.85 m x 3 m	Black	10.5	20
CS010002	0.85 m x 1.5 m	Black	6	20





Hygimat Hygienic Anti-fatigue Mat

A revolutionary hygienic anti-fatigue mat.



FATIGUE RATING



SLIP RATING



WEAR RATING



OIL RESISTANT



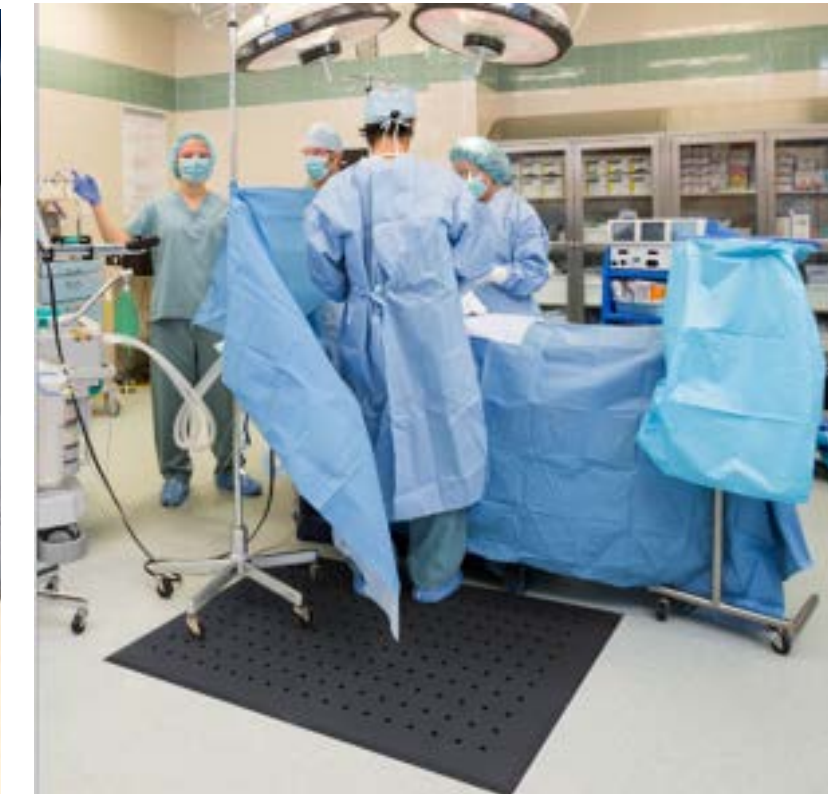
FIRE TESTED



SUITABLE FOR WET ENVIRONMENTS

Hygimat Hygienic Anti-fatigue Mat

- Improve feeling of comfort and energy whilst standing at work.
- Ideal for catering, food manufacturing, hospitality, and food retail.
- Made from a revolutionary 'gel foam' material that combines the best in durability and comfort.
- Material also has anti-microbial properties
- Closed cell construction means that no liquids can penetrate the mat and reduce performance.
- Version with holes is ideal for wet workplaces in need of drainage.
- Oil resistant.
- Easily cleaned – can be cleaned with detergent or can be steam sterilised.
- Fire tested to BS EN 13501-1 and slip tested to DIN 51130.



Part Number	Size	Description	Weight (kg)
HYG010001	0.6 m x 0.9 m	With holes	1.75
HYG010002	0.9 m x 1.5 m	With holes	4.3
HYG010003	0.9 m x 1.8 m	With holes	5.2
HYS010001	0.6 m x 0.9 m	Solid surface	1.85
HYS010002	0.9 m x 1.5 m	Solid surface	4.5
HYS010003	0.9 m x 1.8 m	Solid surface	5.4



K-Mat Rubber Workplace Mat

Reduce fatigue and slips on greasy floors



FATIGUE RATING



SLIP RATING



WEAR RATING



OIL RESISTANT



SUITABLE FOR WET ENVIRONMENTS

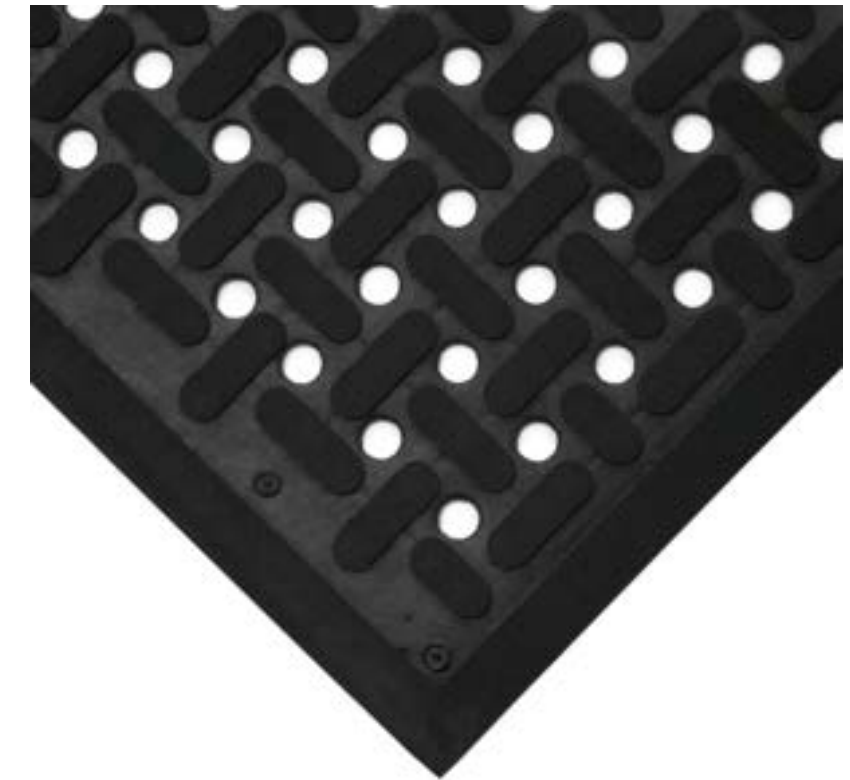


WASHABLE

K-Mat Rubber Workplace Mat

- Contains nitrile to offer the best resistance to oils and chemicals.
- Ideal for food processing and manufacturing locations due to its excellent resistance to grease, fats and detergents.
- Easily cleaned in a commercial washing machine.
- Raised pattern surface for exceptional slip-resistance (tested to DIN 51130).
- Open holes efficiently drain liquids and capture debris.
- Hygienic anti-microbial properties make it suitable for food processing locations.

Part Number	Size	Color	Weight (kg)
KM010001	0.92 m x 1.53 m	Black	7.5
KM010002	0.92 m x 2.9 m	Black	10





Diamond Grid Anti Bacterial

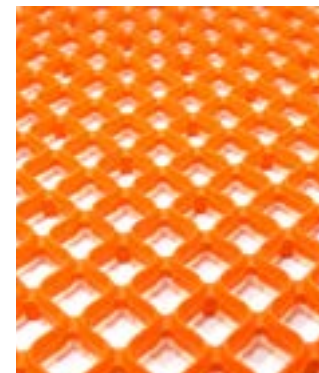
Flexible matting for catering, hospitality and food processing industries

Diamond Grid Anti Bacterial

- Hygienic anti-microbial properties.
- Oil resistant.
- Anti-slip top surface for a safe footing in wet conditions.
- Specially designed underside studs have exceptional water drainage properties.
- Easily cleaned, rolled up and moved.

TECHNICAL SPECIFICATION

Material	PVC + NBR (Oil Proof)
Surface Finish	Diamond grid pattern
Product Height	8.5mm
Product Weight	2.8kg/m ²
Operating Temperature	-5°C to +60°C
Typical Applications	Bar and kitchen areas, food processing areas.
Installation Method	Loose lay
Cleaning Method	Roll up to clean the floor and wash the mat with water.
Country of Origin	China



Part Number	Size	Color	Weight (kg)
DG170001	1m x 2.4m	Orange	7



First-Step Tack Mat

The first step to contamination control.



FATIGUE RATING



SLIP RATING



WEAR RATING



MADE FROM RECYCLED MATERIALS

First-Step Tack Mat

- A hygienic pad of peel-off, disposable sheets, manufactured from an anti-microbial agent to protect against bacteria, mould and mildew.
- The 'tacky' sheets capture dirt and dust from footwear and wheeled equipment for contamination control.
- When the top sheet becomes soiled, simply peel it off to reveal a clean layer.
- Comes with self-adhesive backing to keep the mat in place.
- Ideal for hospitals, clean rooms, general industrial environments, and any other area where hygiene is an important factor.
- **4 Packs in a box with 30 peelable sheets per pack**



Part Number	Size	Color	Weight (kg)
WC000004	0.45 m x 1.17 m	White	3.25
WC020004	0.45 m x 1.17 m	Blue	3.25

Disinfectant Mats



Disinfecting mats play a crucial role in maintaining hygiene and safety in various environments, particularly in areas with high foot traffic or where contamination risks are significant, such as food processing facilities, laboratories, healthcare settings, and public entrances.

These mats are designed to effectively remove dirt, debris, and harmful pathogens from footwear, reducing the spread of bacteria, viruses, and other contaminants.

By providing a **first line of defense** against cross-contamination, disinfecting mats help protect both individuals and the environment from potential health hazards.

Implementing disinfecting mats as part of a comprehensive hygiene strategy can significantly enhance cleanliness, prevent infections, and ensure a safer, healthier space for everyone.

SterMats© Sanitizing Foot Bath



HYGIENE MAT DESIGNED FOR INDUSTRIAL USE THAT MINIMIZES FOOTWEAR CONTAMINATION.

- Microbiological entrance control
- Suitable for safety shoes and gum boots
- Total liquid capacity: 10 liters
- Various Industry approved sanitizer supply
- QAC sanitizer supply in dosing bottle format, only 50ml per daily make-up
- Smooth surface ensures hygienic conditions & easy soil removal
- Strategic placing at process equipment and hygiene focus areas
- Easy movable for easy cleaning
- Dimensions: **993x800x44mm**, fits side by side for wider entrances
- Color coded as per HACCP standards:





COBA® Disinfectant Mat

Scrapes and sanitises footwear in one go, ideal to support COVID-19 protection



FATIGUE RATING



SLIP RATING



WEAR RATING



OIL RESISTANT



FIRE TESTED



SUITABLE FOR WET ENVIRONMENTS

WWW.INDUSTRIS-CO.COM

COBA® Disinfectant Mat

- The resilient vinyl loops scrape dirt off shoes, while the disinfectant solution cleans and sanitises.
- Loose lay on level surface, no installation necessary, and fill base with COBA Care Disinfectant Solution.
- Combine with an absorbent mat to dry footwear when stepping out. We recommend COBAwash®, Wash & Clean, Microfibre Doormat or the Social Distancing Floor Mat.
- The mat features a non-slip vinyl backing and durable, ramped edging.
- Soft, compounded PVC looped surface scrubs, dislodges and traps dirt as traffic passes through.
- Ideal for any workplace where hygiene is important e.g. healthcare, food manufacturing, catering, hospitality, clean rooms or food retail.
- **NEW: Small mat (600 mm x 500 mm)**, perfect for low traffic, room-to-room contamination control.
- Material is REACH Compliant.
- Available in 20 vibrant colours.

Ask us about branding your own mats! Free with orders of 50 or more.



Part Number	Size	Color
CDM001	700 mm x 900 mm	Choice of 20 colours with Black edging
CDM002	1300 mm x 1600 mm	
CDM010	600 mm x 500 mm	



COBA® Care Trio Zone

Scrapes and sanitises footwear in one go, ideal to support COVID-19 protection



WASHABLE



HYGIENE++ ANTIBACTERIAL
VIRUS REDUCING



METAL FREE



ECO-FRIENDLY



BIO-OME REGISTERED WITH
OEKO-TEX®



CERTIFIED BRP- WITH EUCHA

WWW.INDUSTRIS-CO.COM

COBA® Care Trio Zone

PREVENT THE SPREAD OF WALKED IN BACTERIA AND INFECTIOUS VIRAL PARTICLES

- Improves hygiene and contamination control by scraping, sanitising and drying the soles of shoes and boots.
- Loose lay on a level surface, no installation necessary.
- Light and easy to relocate.
- Fill Zone 2 with COBA Care Disinfectant Solution.
- Perfect for medium traffic, room-to-room contamination control.
- Slip-resistant base, with beveled edges, to help retain position and reduce tripping hazards.
- Material: Made from natural and recycled rubber, which is biodegradable and recyclable.
- Product Height: 15 mm.
- **Mat Size: 395 mm x 995 mm.**
- Suitable for schools, daycare centres, small office blocks or home use.

STYLES AVAILABLE



SCRAPER MAT BLACK | CUSHION FALL DARK GREY | TRIO BRUSH ANTHRACITE



SCRAPER MAT BLACK | CUSHION FALL DARK GREY | TRIO SCRAPER GREY



SCRAPER MAT BROWN | CUSHION FALL BROWN | TRIO BRUSH BEIGE

Part Number	Size	Color
CDM004	395 mm x 995 mm.	Black, Dark Grey, Anthracite
CDM005	395 mm x 995 mm.	Black, Dark Grey, Grey
CDM006	395 mm x 995 mm.	Brown, Brown, Beige



Get in Touch

Phone

010 312 5212

Email

info@industris-co.com

Website

www.industris-co.com

Address

11 Wiek Street, Bardene, Boksburg GP, RSA

WWW.INDUSTRIS-CO.COM

Thank you

Feel free to approach us if you
have any questions.

WWW.INDUSTRIS-CO.COM

